

# Conditions & Registration / TWILIGHT TAKE OFF & BREAKFAST – 26<sup>th</sup> & 27<sup>th</sup> June 2021 – English version

## A/ INTRODUCTION

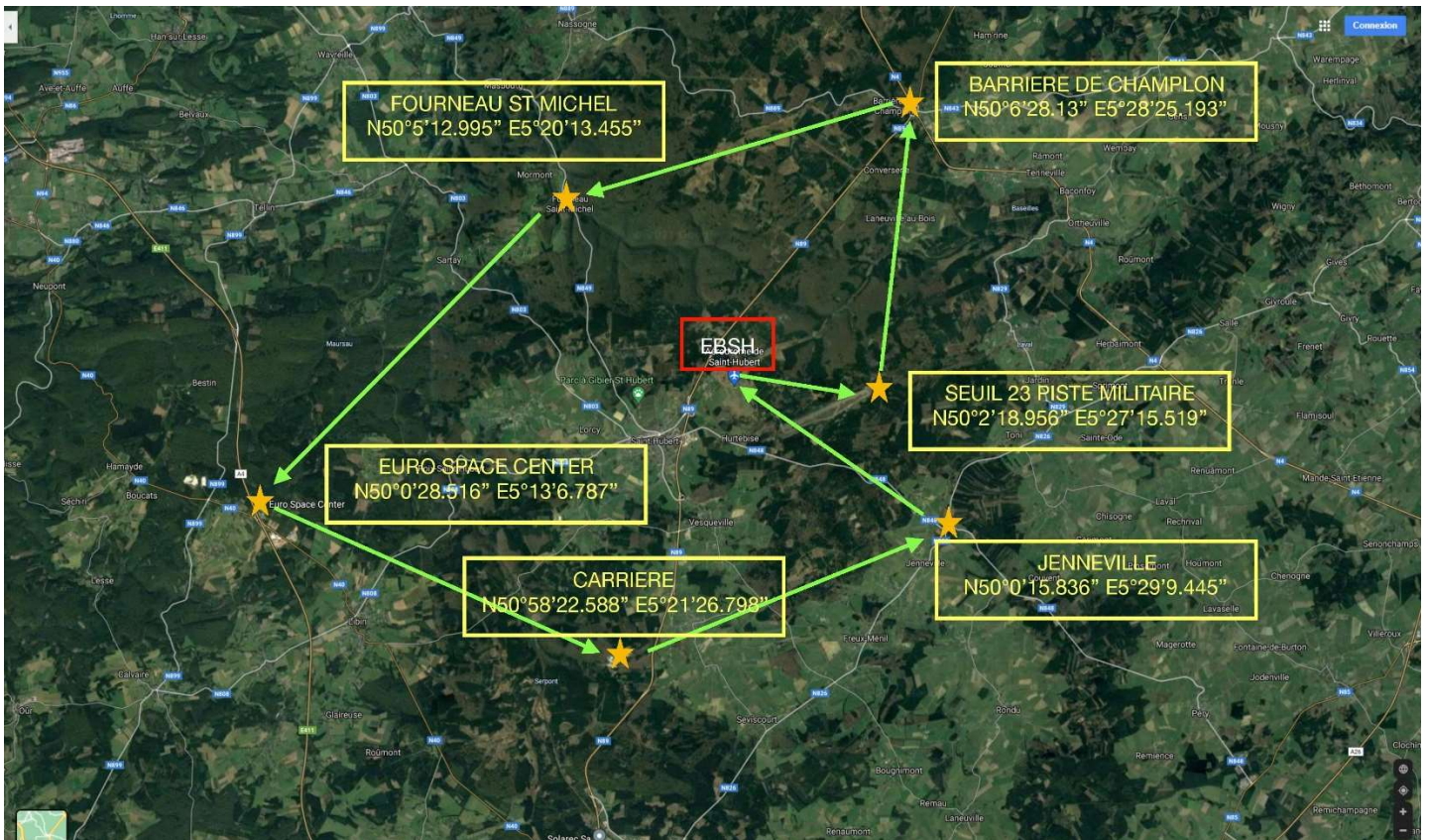
Exceptionally, on Saturday 26<sup>th</sup> and Sunday 27<sup>th</sup> of June, the Saint-Hubert airfield is going to open its runways 30' before the SR for a weekend in order to offer a wonderful flight over the Saint-Hubert forest during the morning twilight.

Once back on the ground, breakfast will be served by the hotel « **les 100 CIELS** ».

## B/ HOW WILL THAT GO

1. Registration mandatory by email ([info@sainthubert-airport.com](mailto:info@sainthubert-airport.com)). Information we need: (See «D» below). Be advised that places are limited.
2. Each aircraft is expected to arrive at EBSH the day before the flight and will be ready for take-off (Fuel/paperwork done/...)
3. Take-off 30' before the SR (0501LT on both days)
4. Below you can see the suggested course.
5. Breakfast will be served once back on the ground, as from 0630LT at the reception room of the hotel « **les 100 CIELS** » situated on the airfield.

## C/COURSE



DISTANCES:

1. EBSH → Military runway 23 threshold: 3,617 KM
2. Military runway 23 threshold → Barrier of Champlon: 7,798 KM
3. Barrier of Champlon → « Fourneau Saint-Michel »: 9,887 KM
4. "Fourneau Saint-Michel" → Euro Space Center : 12,139 KM
5. Euro Space Center → Quarry: 10,372 KM
6. Quarry → Jenneville: 9,820 KM
7. Jenneville → EBSH: 6,993 KM

**TOTAL DISTANCE: 60,626 KM**

This circuit is suggested in order to discover the wonderful forest of the Ardenne while avoiding to the maximum the overflight of populated areas. **Once "airborne", the rules of visual flight are applied, and it will be the responsibility of the pilot to follow or not this course.**

#### **D/ REGISTRATION & PACKAGE**

The registration fee is **40 euros** per aircraft includes the following package:

1. 2 Landing fees.
2. 1 External night parking.
3. 1 Breakfast.

Every additional breakfast will be at **15 euros/pers.**

Registration is received and confirmed once:

1. All the information is received on [info@sainthubert-airport.com](mailto:info@sainthubert-airport.com) (AIRCRAFT MODEL + IMMATRICULATION + DESIRED DATE (Saturday or Sunday) / NAME and PIC contact information (address for invoicing) / + NAME(s) of passengers.
2. Total amount received on **BE62 0910 2207 0761** (Ville de Saint-Hubert) with the following communication: **PIC NAME + Aircraft registration.**

Invoice will be sent following the payment.

**- In case of no twilight take off due to bad weather, no refund will be possible -**

#### **E/ TO BE PLANNED & MANDATORY (otherwise take-off will not be allowed):**

- A headlamp per pilot AND per PAX to see and be seen.
- A yellow jacket per pilot AND per PAX
- A spray against moisture to apply on the windshield in the early morning
- COVID-19: Be able to respect safety protocols in force.

#### **F/ USEFUL INFORMATION :**

As we welcome participants the day before their flight, here are the different housing possibilities close to the airfield:

1. Hotel les 100 CIELS (on the airfield) : 061/41.55.17 or [info@hotelles100ciels.be](mailto:info@hotelles100ciels.be)
2. Camping EUROPACAMP (next to the airfield) : 0499/17.16.33 or [contact@camping-europacamp.be](mailto:contact@camping-europacamp.be)
3. Hotel le 2G (Saint-Hubert) : 061/61.10.93 or [info@hotel2G.net](mailto:info@hotel2G.net)
4. Cottage « LE MOULIN D'EN BAS » (Saint-Hubert) : 0475/66.85.57 or [lemoulindenbas@gmail.com](mailto:lemoulindenbas@gmail.com)

5. Le VAL DE POIX : 061/61.13.29 or [info@levaldepoix.com](mailto:info@levaldepoix.com)
6. Le COR DE CHASSE : 061/61.16.44\_or [www.lecordechassesainthubert.be](http://www.lecordechassesainthubert.be)

Looking forward to see you there,

The Saint-Hubert airfield commander  
Jean-Charles VAN DER WIELEN